



**CNC & SIGNAGE Co.,Ltd**  
Custom Decoration Panels & Signage Solutions



DELIVER MORE THAN EXPECTED

Facebook



Hot Line : 09 791155588, 09 946888878

 : +959 791155588

Mail Address : [ace.cncandsignage@gmail.com](mailto:ace.cncandsignage@gmail.com)

## **ACE- CNC & Signage Brief**

Established in 2000 as **KZ Stainless Steel & Decoration**, our company began by providing high-quality steel products and decorative solutions in Meiktila. Over the years, we've built a strong and loyal customer base in Meiktila and surrounding cities.

In 2022, we proudly expanded our services by launching **ACE- CNC & Signage**, entering the field of CNC cutting and signage production. Today, ACE offers a wide range of advanced fabrication services, including:

- **Fiber Laser Cutting**
- **CNC Router Cutting**
- **Plasma Cutting**
- **Metal Bending & Shearing**
- **CO2 Laser Cutting**
- **Custom Signage & Decorative Panel Production**
- **Modern Furniture**

Our continued investment in state-of-the-art machinery and technology has not only strengthened our capabilities but also delivered measurable benefits to our customers. We are proud of our growth and committed to delivering quality, precision, and satisfaction in every project we undertake.


### **Our Services Include:**

- **Signboard Manufacturing**
- **Wall & Ceiling Decorative Panels**
- **3D Letter Signage**
- **Laser Cutting & Engraving**
- **Acrylic, MDF, ACP, and Metal Fabrication**
- **Custom Logos & Branding Displays**
- **Modern Furniture**

## **Our Advanced Technology**

We use high-precision machines to ensure perfect quality:

- **CNC Router**
- **Plasma Cutter**
- **Laser Machine (CO2 & Fiber)**
- **Metal Bending Machine**
- **UV Printing & Etching**

 *Ideal for corporate branding, retail spaces, architectural interiors, exhibitions and more.*





## Fiber Laser XQL - 3015 (1500W)



### XQL FIBER LASER Cutting Machine

Fiber Laser XQL 3015 is a high-precision laser cutting machine with a **working area of 3000x1500mm**, designed for cutting metal sheets like **carbon steel, stainless steel, aluminum, and brass**. It features **fast cutting speed, low maintenance, and high energy efficiency**, making it ideal for industrial metal fabrication.

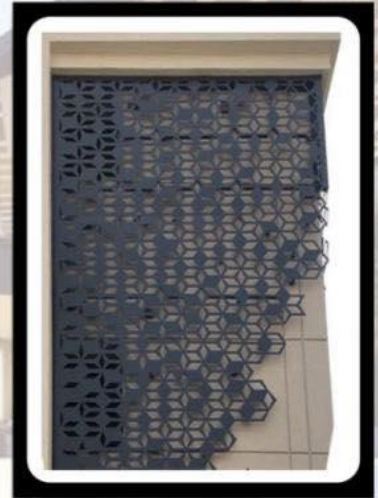
#### Recommended For :

- Construction Companies
- Interior Designs
- Restaurants
- Hotels

#### Services :

- Customize Design Cutting
- Advertising Signages
- Steel Panels Cutting
- Stainless Steel, Hollow Pipe Cutting
- Panels and Components, 3D Letters, Logo Cutting
- Metal Letters, Backlit Signs

# Product Photos





**CNC Roter Cutting 1325**



**CNC Roter Cutting LD-5000**

- (1) The **CNC Router Cutting 1325** is a computer-controlled machine with a **1300x2500 mm work area**. It's commonly used for **cutting wood, plastic, signs, and light metals**.
- (2) The **CNC Router LD 5000** has a larger work area and is designed for **heavy-duty, industrial-scale cutting**.

### **Recommended For :**

- Construction Companies
- Hospitals
- Hotels
- Offices
- Restaurants
- Interior Designs

### **Services :**

- Acrylic Cutting
- PVC, MDF, Composite Processing
- Block Board, Modern Furniture
- 3D Engraving, Doors, and Frames
- Decorative Panels
- Signboard and Letter Engraving



## Co2 Laser



**HSG 8'x4'**



**Boming Laser 150W**

- (1) CO2 Laser HSG is an industrial-grade CO2 Laser with a **8x4 ft (2500x1300 mm)** work area, designed for **large-format cutting** of non-metals such as acrylic, wood, fabric, and MDF. Delivers **fast, clean cuts** for furniture, advertising, and decoration industries.
- (2) CO2 Laser 150W (Boming) is a 150w CO2 Laser cutter with a **4x3 ft (1200x900 mm)** work area, ideal for **non-metal materials** like wood, acrylic, leather, and plastic. Offers **high-precision engraving and cutting** for signage, crafts, and light industrial use.

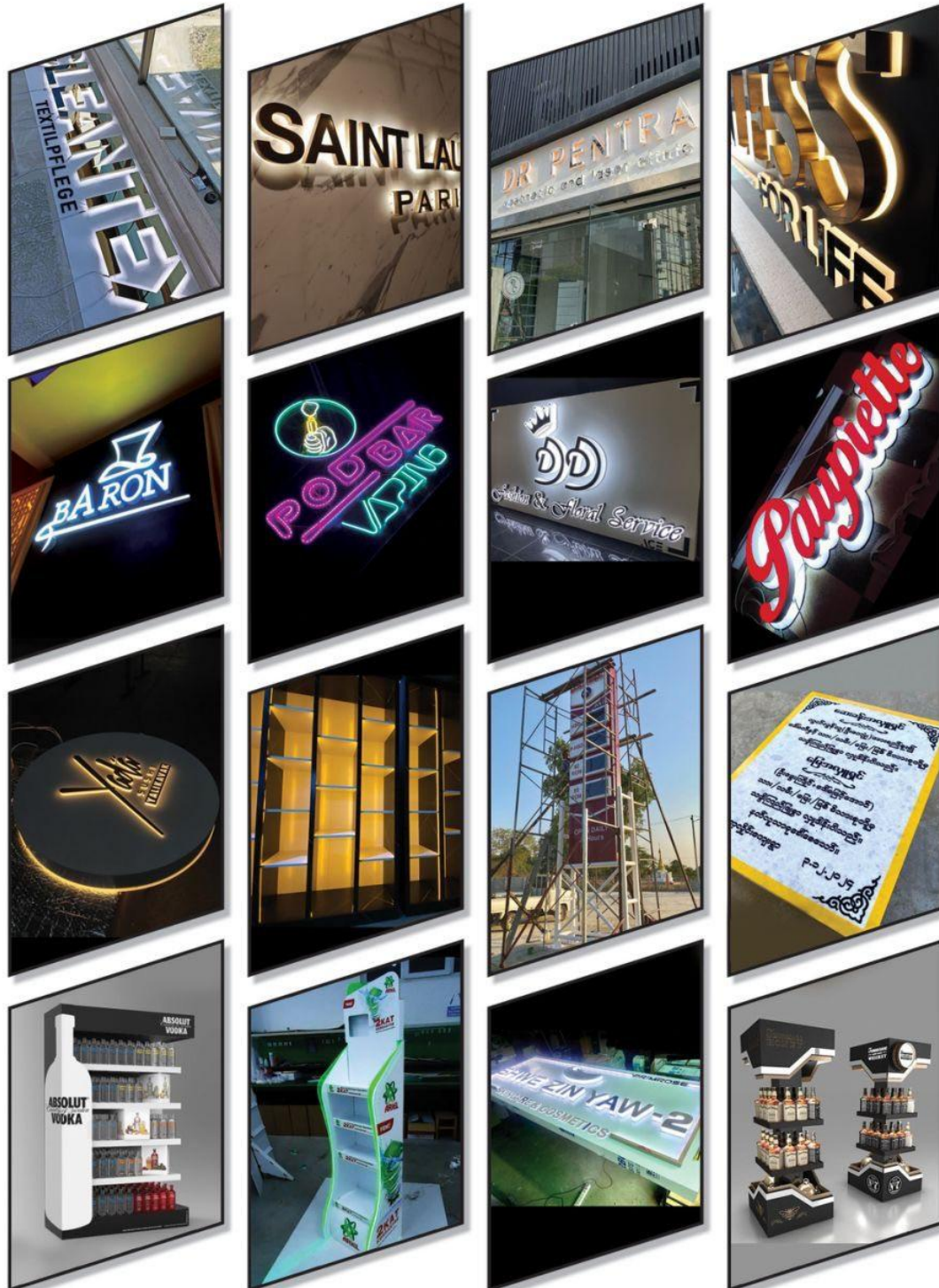
### Recommended For :

- Advertising
- Interior Designs
- Monasteries
- Hotels, Companies and
- Businesses
- Decorations

### Services :

- Acrylic Cutting
- Plywood, MDF Engraving/Cutting
- Finger Joint Engraving
- စတုဂံကွက်ကတ်စာ
- Display Box
- Advertising Signage
- Neon Signage
- DIY Projects

# Product Photos



SHINE YOUR BUSINESS WITH **ICE**

## Plasma 5'x10'



### CNC Plasma Machine

CNC Plasma Machine 5'x10' is a heavy-duty CNC Plasma Cutter with a **5x10 ft (1500x3000mm) work area**, designed for **fast and precise cutting of metals** like mild steel, stainless steel, and aluminum. Ideal for fabrication shops, metal art, and industrial parts production.

### Product Photos



### Services :

- Customize Design Cutting
- Structural Metal Cutting
- Signage Frame
- Decorative Panels
- Gate, Doors Patterns

## Bending and Shearing Machine



**Bending**



**Shearing**

The Bending and Shearing Machine 6T has a capacity of 6 tons, can shear metal sheets up to 3-6 mm thick, and bend materials up to 1300-2000 mm in length, featuring a heavy-duty steel frame and either manual or CNC control.

## Product Photos



## Services :

- Mild Steel, Stainless Steel, Aluminum
- Part Production, Frames
- Ducts, Panels, Brackets
- Custom Cuts and Bends
- Exhaust Fun Frame

SHINE YOUR BUSINESS WITH



## Why Choose Us?

- ✓ Custom Designs
- ✓ Durable Materials
- ✓ Precision Cutting
- ✓ Fast Turnaround
- ✓ Affordable Pricing